

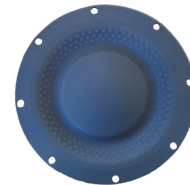
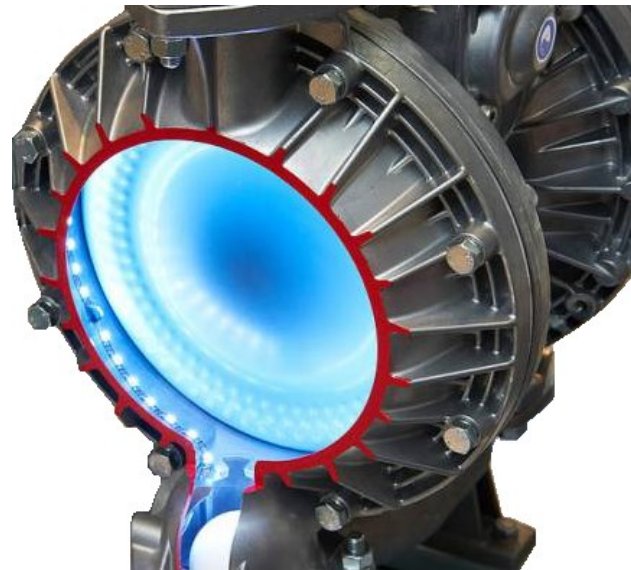


The **Ultimate Teflon®** "TU" Diaphragm

Yamada offers a Unique Unified PTFE diaphragm with bonded rubber backer for the 1½" NDP-40, 2" NDP-(P)50 and 3" NDP-80 series.

This unique design offers:

- A long life FLEX PTFE diaphragm.
- An easy clean FLEX PTFE diaphragm as no center disc, nut or center rod is inside the fluid area.
- No center hole leak path
- A litre per minute pump performance equal to rubber diaphragms.
- An optimum fluid chamber filling.
- An optimum energy versus litre per minute ratio at all levels.
- An upgrade for existing PTFE fitted pumps.
- An ATEX conform solution in all our metal and PVDF pump executions with aluminium motor.
- Bolted holes to secure leak free operation



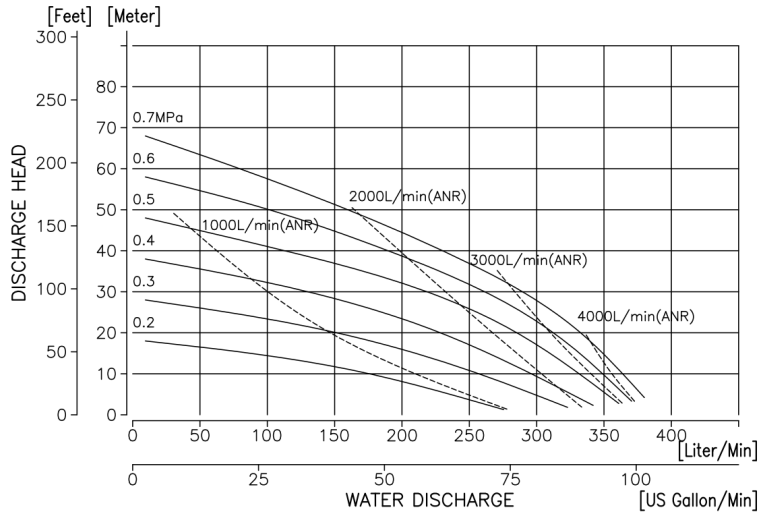
All of this in combination with the well known Yamada advantages like:

- Non stalling spring loaded air valve
- Lube free air valve
- Graphite filled seal rings
- Out side accessible air valve
- Bolted design
- Unique double pilot valve shifting execution
- Maintenance indicator, reset button
- High quality black PTFE coating for aluminium motor protection
- PPG motor as standard but also as option
- And many more

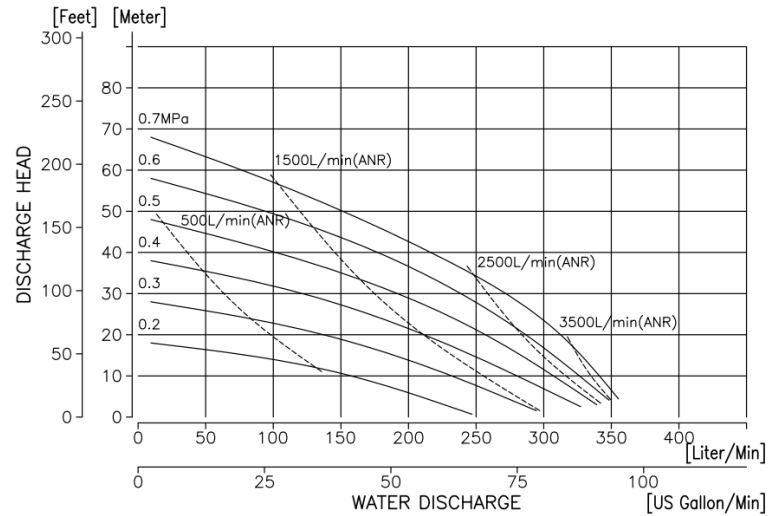


The Ultimate Teflon® "TU" Diaphragm Performance curves

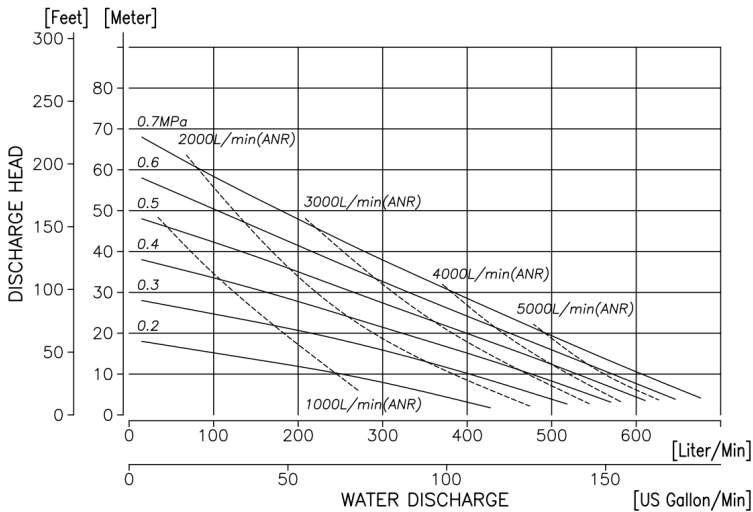
NDP-40 METAL TU



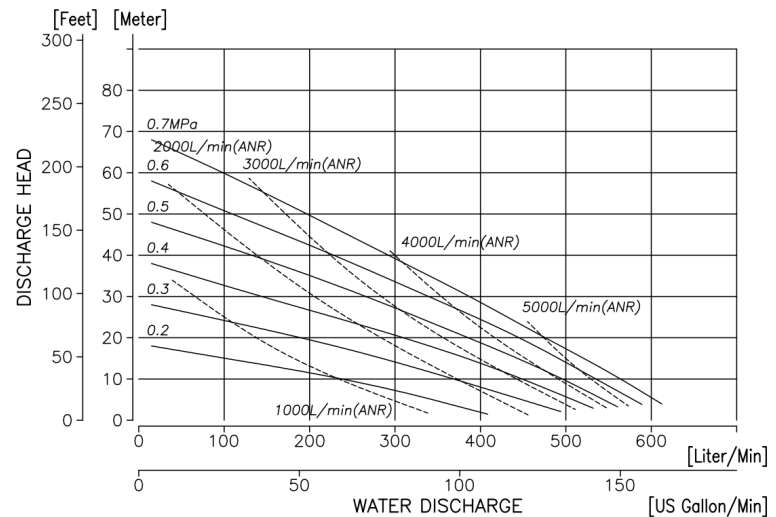
NDP-40 PLASTIC TU



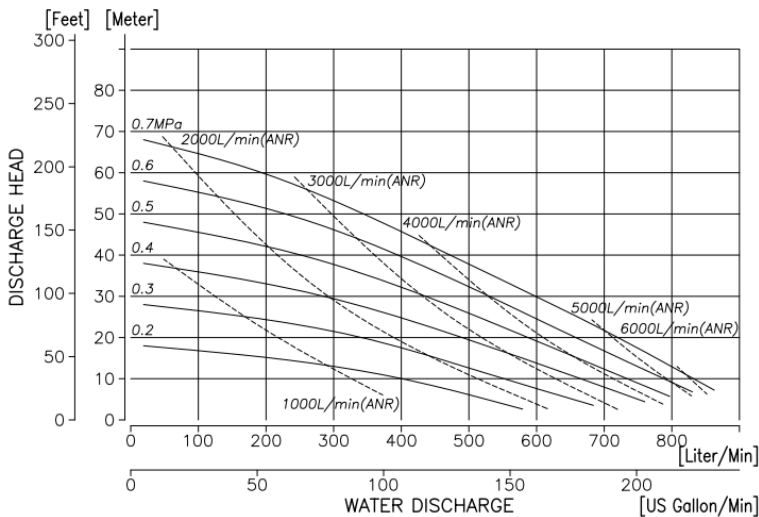
NDP-50 METAL TU



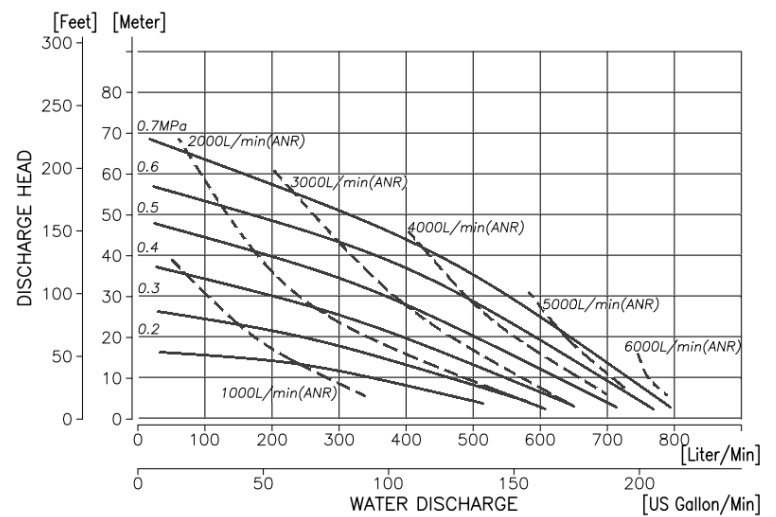
NDP-50 PLASTIC TU



NDP-80 METAL TU



NDP-80 PLASTIC TU





The Ultimate Teflon® "TU" Diaphragm

Pump Specifications:

- Available for all NDP-40, (P)50 and 80 MODELS
- Metal options: Aluminum, Stainless steel, Cast iron.
- Synthetic options: PVDF and PPG.
- Fluid connections depending on pump material:

Size 40 mostly DN flange 1½" or Rc 1½" for Cast iron. Aluminum has a combi flange/Rc connection. ANSI is available on request.

Size 50 mostly DN flange 2" or Rc 2" for Cast iron. Aluminum has a combi flange/Rc connection. DN flanges are also equivalent to ANSI and JIS.

Size 80 mostly DN flange 3" or Rc 3" for Cast iron. Aluminum has a combi flange/Rc connection. DN flanges are also equivalent to ANSI and JIS.

- Other connections are available as option. Please ask Yamada Europe.
 - Control valve and silencer are standard with every Yamada pump
 - For specific ATEX rate, please contact YE
- teflon® is a registered trademark of dupont*


TU Technical specifications;

Material: PTFE/EPDM
Pressure: Up to 7Bar (0,07MPa)
Temperature: -10 - 90° C
(14 - 194°F)

FDA Compliant
Estimated Life time:
Comparable with rubber diaphragms.



The Easy Clean construction creates a diaphragm suitable for applications where a wide variety of fluids are pumped with the same pump, and mixing up is not allowed do to safety reasons or others.
Paint, Ink, Chemicals, Food and many more.
The smooth surface leaves no residue after cleaning.

 **Yamada offers for every series a convert kit to easy upgrade your existing pump to TU diaphragms**
Contact YE for more info.

